

THE MOST DANGEROUS SPOTS ON YOUR JOB SITE

Knowing where the most frequent—and serious—accidents occur on construction sites can help you prevent them.

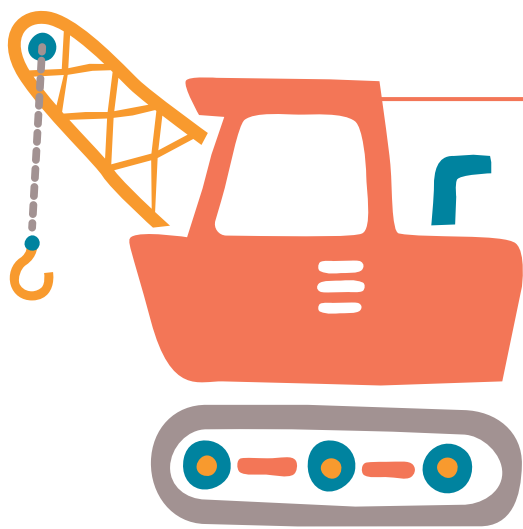
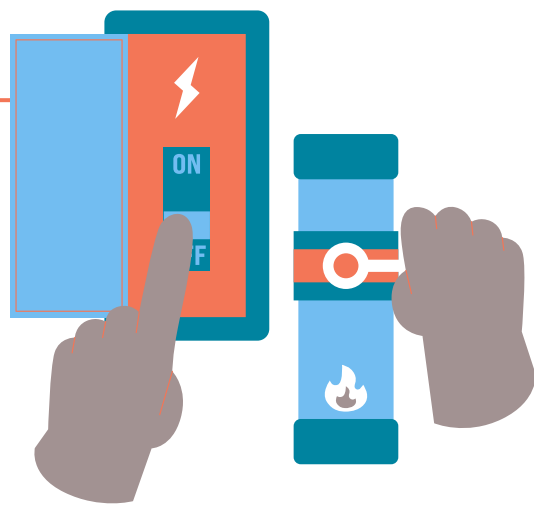


In High Places

Falls are the leading cause of fatalities in the construction industry, accounting for roughly 35% of all construction-related deaths.

In Electrical Areas

Electrocutions caused 9% of construction worker deaths, but made up less than 1% of total recordable injuries—making them one of the more fatal workplace injuries.

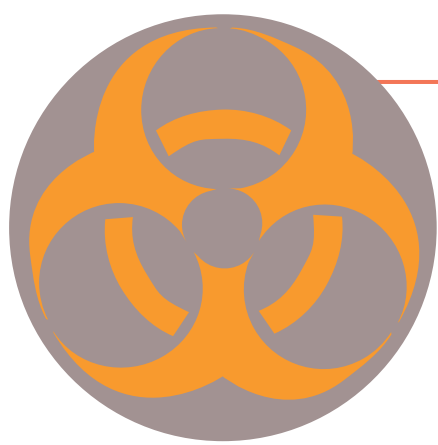


In & Around Equipment

More than 30% of construction laborers must drive motorized vehicles or equipment as part of the job; this makes equipment-related injuries higher in construction than most other industries.

In Trenches & Tunnels

More than 80% of trench-related deaths occur in construction. Confined spaces cause injuries and deaths each year as well—due to cave-ins, loss of oxygen and exposure to hazardous materials.



Near Hazardous Materials

Construction workers are at an increased risk of COPD due to exposure to hazardous gases, dust and other fumes on the jobsite.

Around Heavy Objects

In addition to falling objects and moving equipment, construction workers are often injured from heavy lifting. In fact, overexertion accounts for 22% of all nonfatal injuries involving days away from work.



Sources
[Occupational Safety and Health Administration \(falls\)](#)
[Occupational Safety and Health Administration \(electrocution\)](#)
[US Bureau of Labor Statistics](#)
[Center for Disease Control](#)
[Occupational Safety and Health Administration \(confined spaces\)](#)
[National Center for Construction Research and Education](#)
[National Safety Council](#)

ON SITE
MEDICAL